

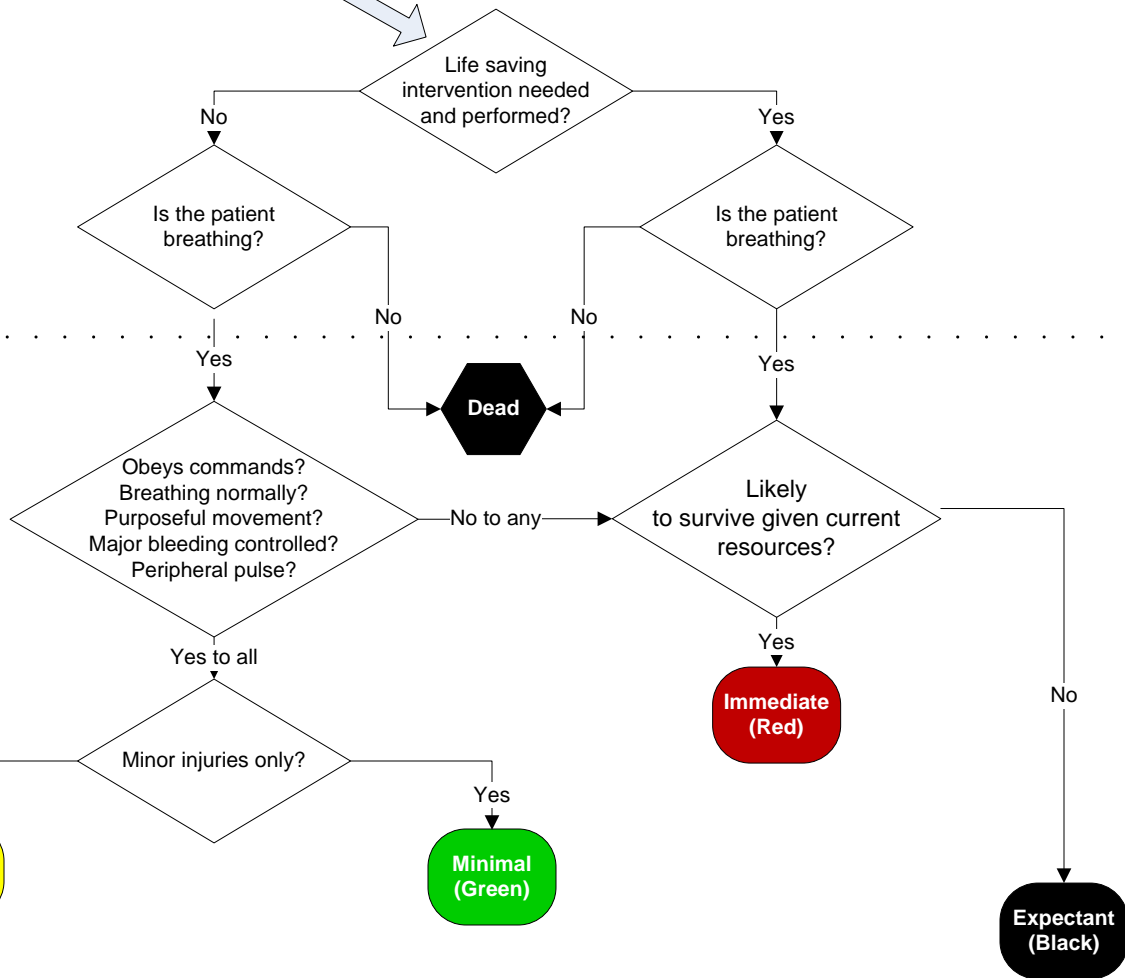
MASS Triage and ID-ME

Step 1:
Move

1. Instruct all who are able to **walk** to move to designated area
 2. Instruct remaining to **wave** or make other purposeful movement
 3. Begin with those who do not **walk** or **wave**
-
1. Assess & sort those remaining who are still or have obvious threat to life
 2. Assess & sort those who could not **walk** but could **wave**
 3. Assess & sort those who were able to **walk**

Step 2:
Assess

- A Open **Airway** (if child consider 2 rescue breaths)
- B Control Major **Bleeding**
- C **Chemical** Antidote (auto-injector)
- D **Decompress** Chest



Step 3:
Sort (ID-ME)

Step 4:
Send (ID-ME)

